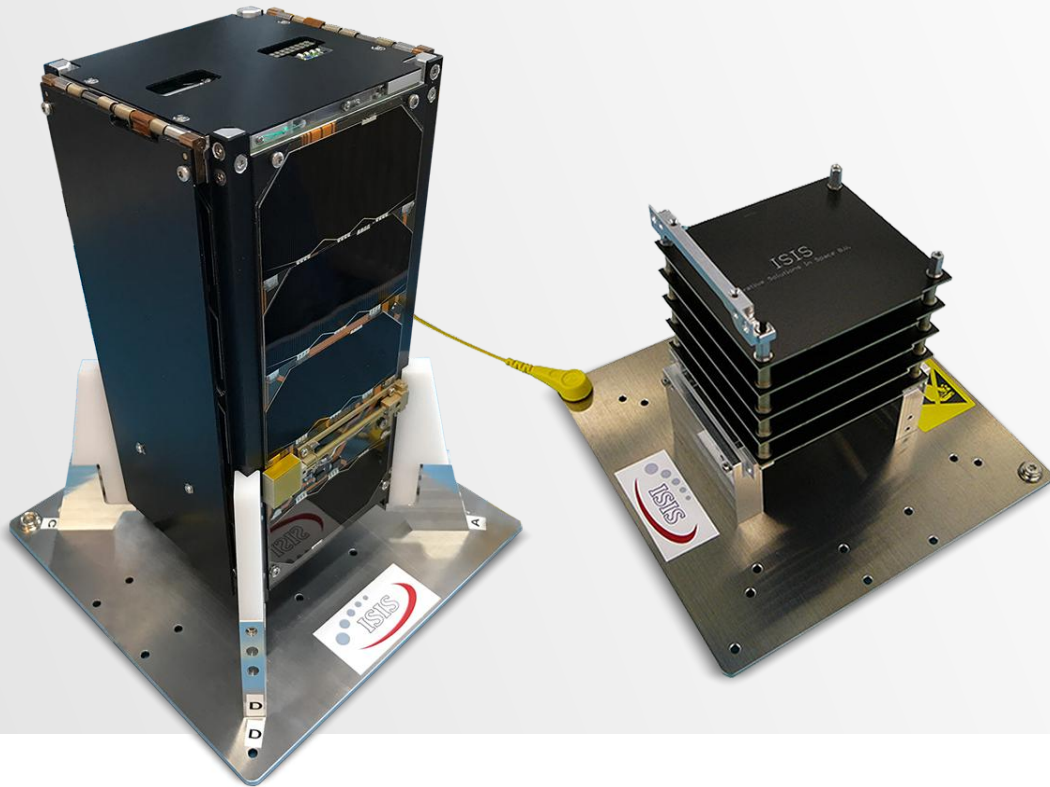


Structure Integration Support



CubeSat standard compliant

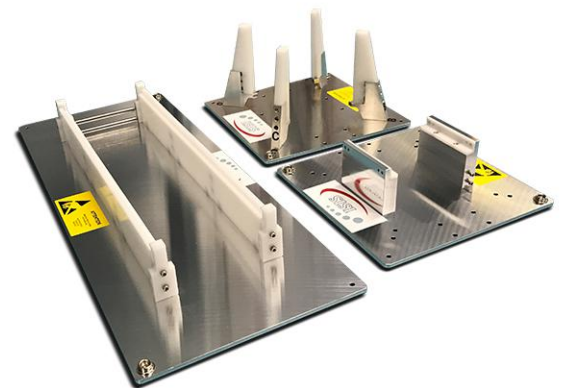


DESCRIPTION

The ISIS Structure Integration Support Jigs provides customers with a COTS solution for handling CubeSat Flight Hardware. The jigs allow for a stable working environment for the users of CubeSat structures and protect the satellite sub-systems from Electro Static Discharges.

FEATURES

- The jigs are equipped with rubber stand-off for electrical isolation
- 2 x mounting interface for ESD cable
- Segmented rails for quick adaptability between different CubeSat sizes
- Used for mounting ISIS CubeSat Structure stacks to the structure side-frames
- POM mounting rails & clamps to prevent damage to structure
- ESD protection of structure through additional ESD cable
- Compatible with ISIS, Pumpkin and custom designed CubeSat structures



Integration Jig set 2U/3U CubeSat

PROPERTIES

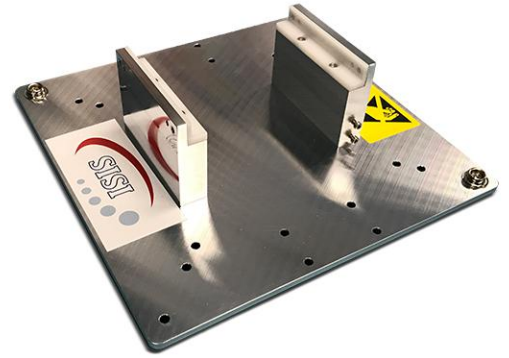
Jig	STA1U	HISJ	VISJ
Length	200 mm	500 mm	200 mm
Width	200 mm	200 mm	200 mm
Height (without S/C)	60 mm	62 mm	120 mm
Clearance between baseplate & S/C	41 mm	40 mm	20 mm
Material	Aluminium, POM		



Integration Jig set 1U CubeSat

STACK INTEGRATION SUPPORT JIG (STA1U)

- Support jig for integration of ISIS CubeSat structure stacks
- Provides a steady base for integration of PCBs onto the CubeSat ribs
- POM covers to prevent damage of structure parts
- ESD protection of structure through fasteners & mounting bracket
- A perfect solution to create a bench satellite setup of your engineering model



Stack Integration Support Jig

HORIZONTAL INTEGRATION SUPPORT JIG (HISJ)

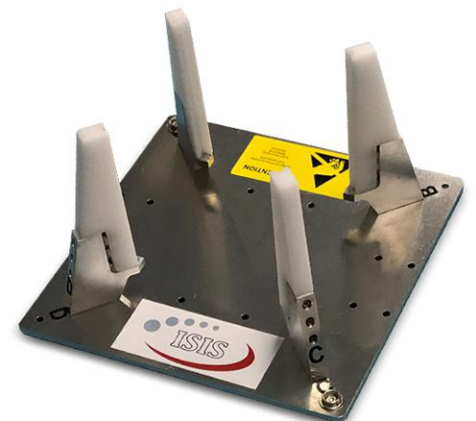
- Horizontal support jig for ISIS 2U and 3U CubeSat structures
- Segmented rails for quick adaptability between different CubeSat sizes
- Used for mounting ISIS CubeSat structure stacks to the structure side-frames
- POM mounting rails & clamps to prevent damage to structure
- ESD protection of structure through additional ESD cable



Horizontal Integration Support Jig

VERTICAL INTEGRATION SUPPORT JIG (VISJ)

- Vertical support jig for ISIS 1U, 2U, 3U and 6U CubeSat structures
- 2 fixed clamps and 2 adjustable POM clamps (to prevent damage to structure)
- Used for mounting external payload on CubeSats, functional test of satellite systems and environmental testing of satellites
- ESD protection of structure through additional ESD cable
- Compatible with every structure adhering to the CubeSat Standard



Vertical Integration Support Jig

AVAILABLE CONFIGURATIONS

- Stack Integration Support Jig (STA1)
- Horizontal Satellite Integration Support Jig (HISJ)
- Vertical Satellite Integration Support Jig (VISJ)
- 1U Integration Support JIG SET (STA1U + VISJ)
- 2 or 3U Integration Support Jig Set (STA1U + HISJ + VISJ)



This document is subject to change without notice. Latest information is on www.isispace.nl



ISIS - Innovative Solutions In Space B.V.
Motorenweg23, 2623CR, Delft, The Netherlands
T: +31 152569018
info@isispace.nl
www.isispace.nl

